

\\ VT7W814LZ

Heavy Duty / Works with Fleetview™

Improve safety and efficiency with the VT7W814LZ Forklift Camera with Laser kit.

The wireless camera and monitor provide a real-time view of the area in front of your forks for safe operation where visibility is restricted. The built-in laser guide allows precise, efficient positioning of the forks. The camera and monitor are built to last with industrial grade ingress protection and vibration ratings. With wireless connectivity and an optional rechargeable battery pack (VT509) the camera requires no additional wiring. The camera is easy to install and adjust with a strong magnetic mounting system.

Applications

- › Forklift
- › Stacker
- › Telehandler

Main Features

- › Real-time view in front of your forks
- › Laser guide for precise fork positioning
- › Heavy duty ingress protection and vibration ratings
- › Works with Fleetview™
- › 24/7 Duty Cycle
- › 3 Year NZ/AU Warranty

Fit For Purpose

Industrial ingress protection, temperature and vibration ratings ensure the kit can survive in demanding conditions.

Works with Fleetview™

ViewtechAI™ works with Fleetview™, a comprehensive recording and remote access platform.

Included

VT814LZ Wireless Camera with Laser Guide
VT7WPQW-720 Waterproof Wireless Quad Monitor

Optional

VT509 Rechargeable Battery Pack



Camera Specifications	VT814LZ
Resolution	1080P High Definition
Wireless transmission	Up to 120 m
Viewing angle	62°
Operating frequency	2403 - 2478 MHz
Power	12 – 30 VDC
Vibration	ISO 16750-3 (17.3G)
Protection	IP69K
Operating temp	-20° – 70°C

Monitor Specifications	VT7WPQW-720
LCD Size	7 inch
Contrast	600:1
Brightness	600 cd/m ²
Operating frequency	2400 - 2483.5 MHz
Power	10 – 32 VDC
Vibration	ISO 16750-3 (5.9G)
Protection	IP66
Operating temp	-20° – 70°C



3-5 YEAR
NZ/AU WARRANTY



24-HOUR
SUPPORT



ONLINE
ASSISTANCE



SMART
TECHNOLOGY



FIT FOR
PURPOSE

0800 888 324
viewtech.co.nz

Viewtech Wireless Camera Laser Kit

Overview



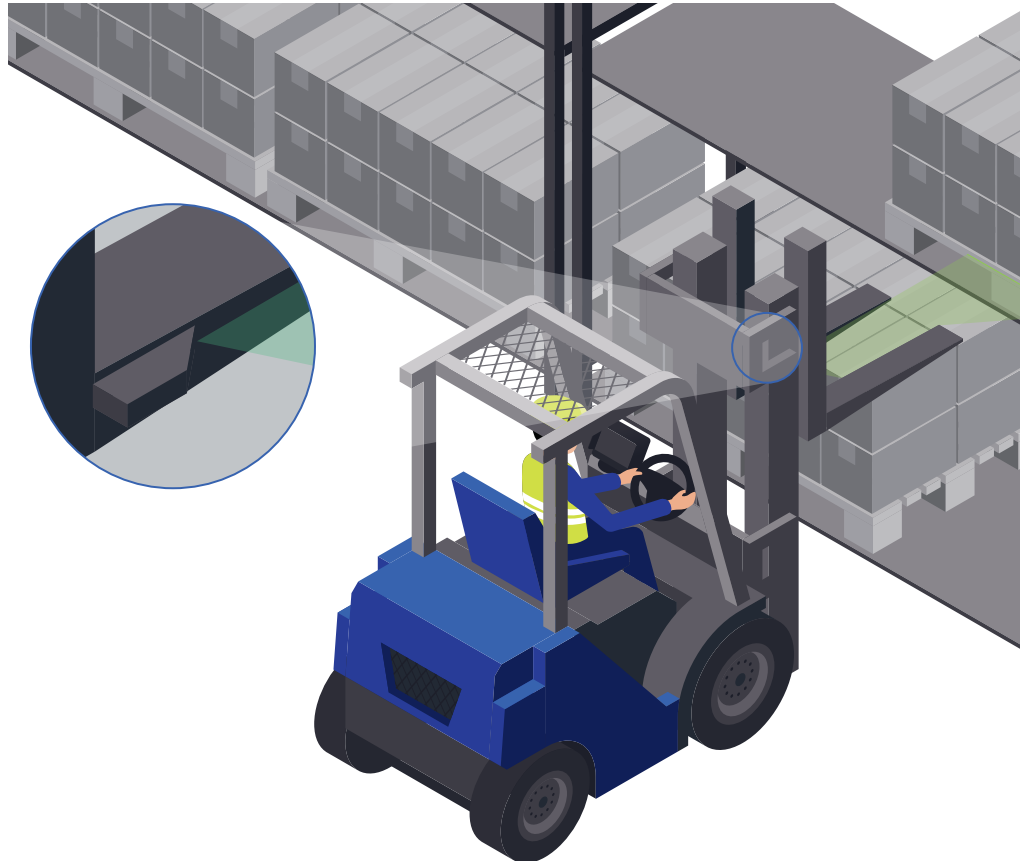
An ideal forklift safety and efficiency system

The wireless camera and monitor provide a real-time view of the area in front of your forks.

The built-in laser guide allows precise positioning of forks and loads during operation.

The camera and monitor are built to last with industrial grade ingress protection and vibration ratings.

With easy-install strong magnetic mounts and an optional rechargeable battery pack (VT509) the camera requires no additional wiring.

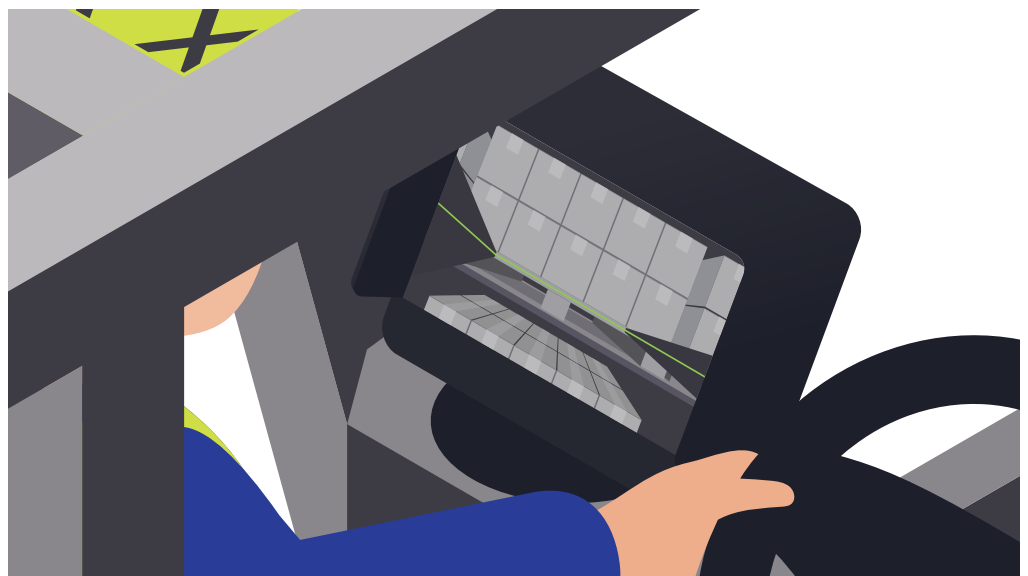


Get a clear view

The Viewtech VT7WPQW-720 wireless waterproof monitor is designed for demanding environments and is fully dust proof, waterproof and shock proof. Perfect for larger and heavy duty vehicles, and open cab vehicles.

It comes with a wide range of mounting options and can be mounted upside down.

Connect to up to 4 wireless cameras.



3-5 YEAR
NZ/AU WARRANTY



24-HOUR
SUPPORT



ONLINE
ASSISTANCE



SMART
TECHNOLOGY



FIT FOR
PURPOSE

0800 888 324
viewtech.co.nz