

Viewtech 25W Industrial Work Industrial Quality



\\ XW3025

IP69K & Salt Resistant / High Quality Construction / Multi-Voltage

Viewtech work lights are fit for purpose and use ultra high quality components.

They can be used for any work light application as standalone or be used to assist Viewtech camera systems.

Applications

- › Forklifts and Material Handling
- › Skid Steers
- › Agriculture
- › Road Working
- › Refuse Collection

Main Features

- › High quality hardware and fittings
- › Long lasting LED modules
- › EMC rated
- › Salt protected
- › Multi-voltage
- › High operating temperature range
- › High vibration resistance
- › 3 year NZ/AU Warranty

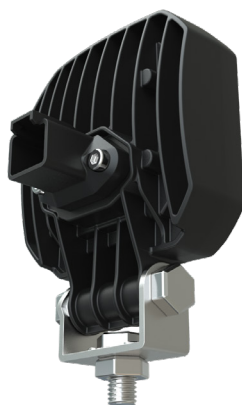
Fit For Purpose

Temperature and vibration ratings ensure the unit can survive extremely harsh conditions.



Specifications

LED Power	25W
Lumens	1000LM
LED Modules	4W 5700K
Lighting Pattern	-40°C - 65°C
Power	12V-36V DC
Dust/Water Rating	IP69K
Materials	Polycarbonate lens, Stainless Hardware, Treated alloy Housing
Salt	126hr Salt Spray
Compliance	EMC EN-55015, Class 3, ER10



3-5 YEAR
NZ/AU WARRANTY



24-HOUR
SUPPORT



ONLINE
ASSISTANCE



SMART
TECHNOLOGY



FIT FOR
PURPOSE

0800 888 324
viewtech.co.nz