

Fleetview™ 4CH Mobile DVR

Industrial Quality Recording Solution



\\ FV401 (no 4G)
\\ FV401AI-4G

Four Camera Recording / ISO 16750-3 5.9G Vibration Rating / Works with Fleetview™

The Viewtech FV401AI-4G is a fully featured, fit for purpose mobile DVR with full remote access via the Fleetview platform.

Works with all Viewtech vehicle cameras and monitors and can store up to 6 weeks of video.



Applications

- › Road Working, Construction & Mining
- › Marine & Engine Room Monitoring
- › Transportation
- › Agriculture
- › Traffic management
- › Forestry

Main Features

- › 4 camera recording
- › High resolution 1080p imaging
- › 2 x Micro SD Card Slots (2 x 256GB)
- › Lockable and encrypted
- › Works with Fleetview™ Recording Platform
- › Alarm inputs

A.I Features (cameras required)

- › Driver state monitoring (sleep, smoking etc)
- › BSD Blind spot detection
- › ADAS (lane departure, forward collision etc)

Fit for Purpose

Temperature and vibration ratings ensure the unit can survive extremely harsh conditions.

Multiple Camera & Monitor Options

Use any Viewtech AHD cameras and monitors for a comprehensive recording platform. This recorder is also compatible with older CVBS analogue cameras.

Specifications

Camera Inputs	4 x AHD 1080p Inputs
Operating System	Linux Based
Video Output	1 x CVBS
GPS	Yes
SD Storage	2 x Micro SD 256GB Each
Sim Slot	1 x Standard Size Sim Slot
Alarms	4 x Inputs, 2 x Outputs
Vibration	ISO 16750-3 5.9G
G-Sensor	6 Axis Sensor
Dimensions	167 x 146 x 54 (mm)
Weight	830g



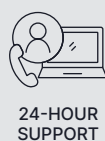
Viewtech Check tool

This tool allows Fleet administrators to setup and run diagnostics on DVR units using a phone or tablet. It allows easy access to live view or back up Footage if the 4G option is not used or available.



Optional Driver State Monitoring Camera

This camera is designed to track the operators eye movements. It can detect sleepiness, smoking and distractions and can alert Fleet managers or trigger an alarm or seat vibration device.



0800 888 324
viewtech.co.nz

Fleetview™ allows real time visual access for Viewtech Fleetview™ mobile DVR units.

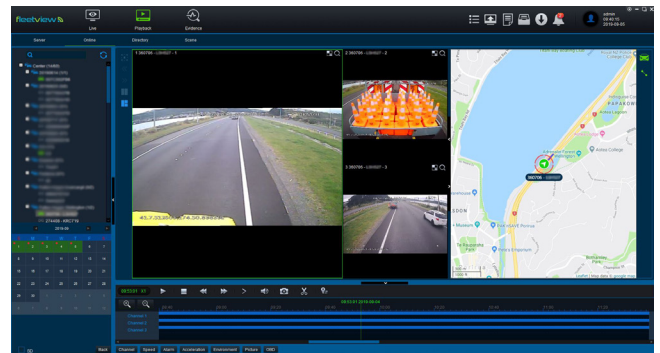
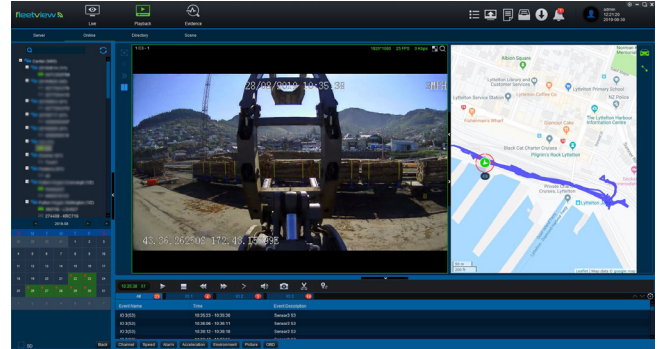
Save time and money by remotely downloading event videos and receive alarms on any kind of status that needs reporting. Fleetview™ provides a 360° view of your Fleet and its operations using the power of video.

Main Features

- › Live view video from your Fleet
- › Replay events
- › Receive real time alarms on any electrical input, G-force, system errors
- › Extract HD videos over the air
- › Utilize driver state monitoring and seat vibration pack

Works with Fleetview™

Fleetview™ works with Viewtech Fleetview™ mobile DVR units, cameras and monitors. This provides an all-round and comprehensive mobile DVR and video platform which can be integrated with monitors for operator blind spot monitoring.



ViewtechAi™ Pedestrian Detection

Fleetview™ also works with ViewtechAi™ Pedestrian detection cameras and real time pedestrian present alarms can be fed into Fleetview™ for easy review.

Works with:
ViewtechAi™

Mobile App

A mobile app also provides realtime access to Fleetview™ when ever you need it. Simply open the app, click on a vehicle and see real time video, location and alarm data. Push notifications can also be setup based on alarm inputs and conditions.

