

# Viewtech 50W Industrial Work Industrial Quality



\\ XW5050F

IP69K & Salt Resistant / High Quality Construction / Multi-Voltage

Viewtech work lights are fit for purpose and use ultra high quality components.

They can be used for any work light application as standalone or be used to assist Viewtech camera systems.

### Applications

- › Forklifts and Material Handling
- › Skid Steers
- › Agriculture
- › Road Working
- › Refuse Collection

### Main Features

- › High quality hardware and fittings
- › Long lasting LED modules
- › EMC rated
- › Salt protected
- › Multi-voltage
- › High operating temperature range
- › High vibration resistance
- › 3 year NZ/AU Warranty

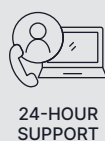
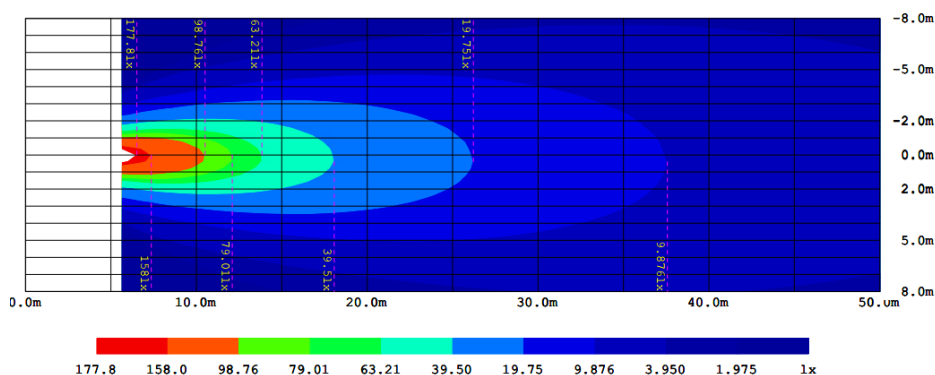
### Fit For Purpose

Temperature and vibration ratings ensure the unit can survive extremely harsh conditions.



### SPECIFICATIONS

LED Power	50W
Lumens	3500LM
LED Modules	10W 5700K
Lighting Pattern	-40°C - 65°C
Power	12V-48V DC
Dust/Water Rating	IP67
Materials	Polycarbonate lens, Stainless Hardware, Treated alloy Housing
Salt	126hr Salt Spray
Operating Temperature	-40°C - 65°C
Dimensions	110(w) x 95mm(d) x 150mm(h)



0800 888 324  
[viewtech.co.nz](http://viewtech.co.nz)