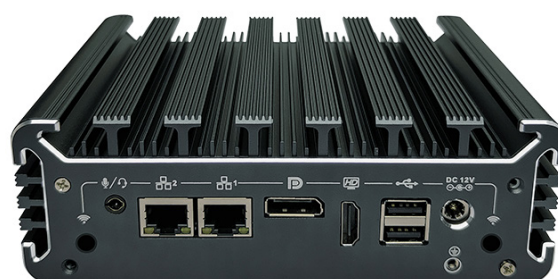




VMS Servers

All Viewtech VMS Servers are optimised for video recording and management and come with a NZ return to base 3 year warranty. Built to your OS, RAM and Storage Requirements.



Features

PART VMS11

- 1 × 2.5" Bay, 1 x M.2
- Built in HDMI
- Micro Form Factor
- Record around 80 Megapixels (Nx Witness)*
- Windows or Ubuntu OS Compatible
- Compatible with MOST modern VMS platforms including Nx Witnessplatforms including Nx Witness



*depending on bitrate, frame rates and other variables

Specifications

CPU	Intel Core i5 7200U Dual Core 2.5Ghz KabyLake-U
RAM	1 x DDR4 1866/2133 Mhz SODIMM Ram Max 16GB
Storage Bays	1 x M.2 2280 Slot, 1 × 2.5" HDD
Video Out	1 x HDMI, 1 x Display Port
Front I/O	4 x USB3.0, 1 x Power, 2 x COM
Rear I/O	2*RJ45 Lan, 2*USB2.0, 1*HDMI, 1*DP, 1*Audio(Support Mic and Audio), 1*DC-IN 12V
Display	1 x HDMI, 1 x Display Port
Form Factor	Micro Fanless
PSU	12V DC 8W Max
Dimensions	155 × 126 × 52mm

