

CP5-900

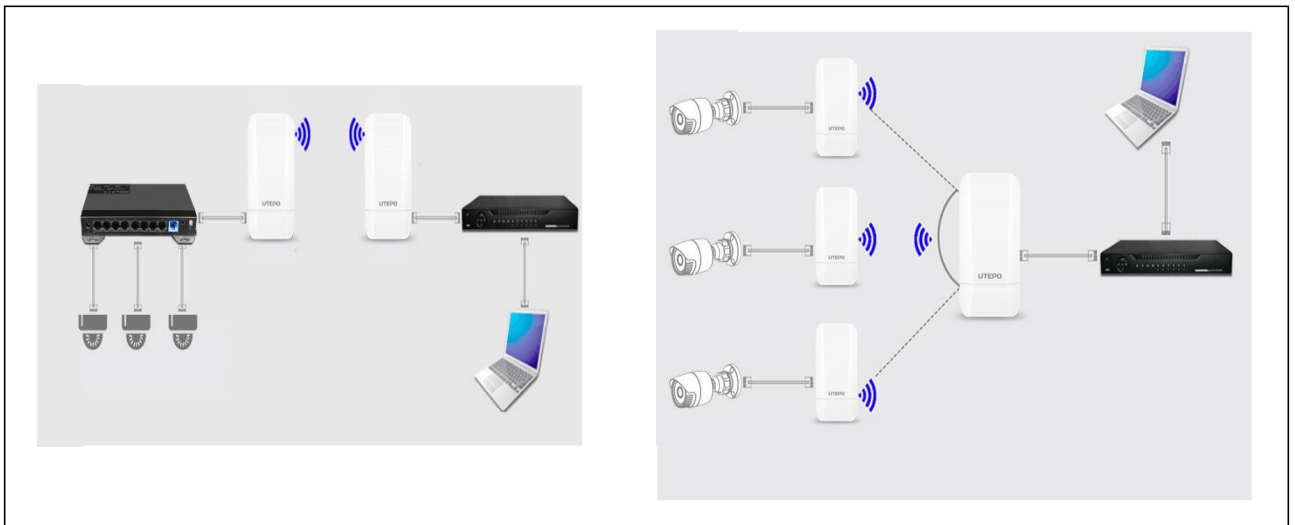


- 5GHz operating frequency band ensures less wireless interference.
- Support data transfer distance up to 3km.
- Wireless speed up to 867Mbps, built-in 12dBi dual-polarized directional antenna.
- Support 24V PoE / DC 12V/1A powered.
- IP65 enclosure design.

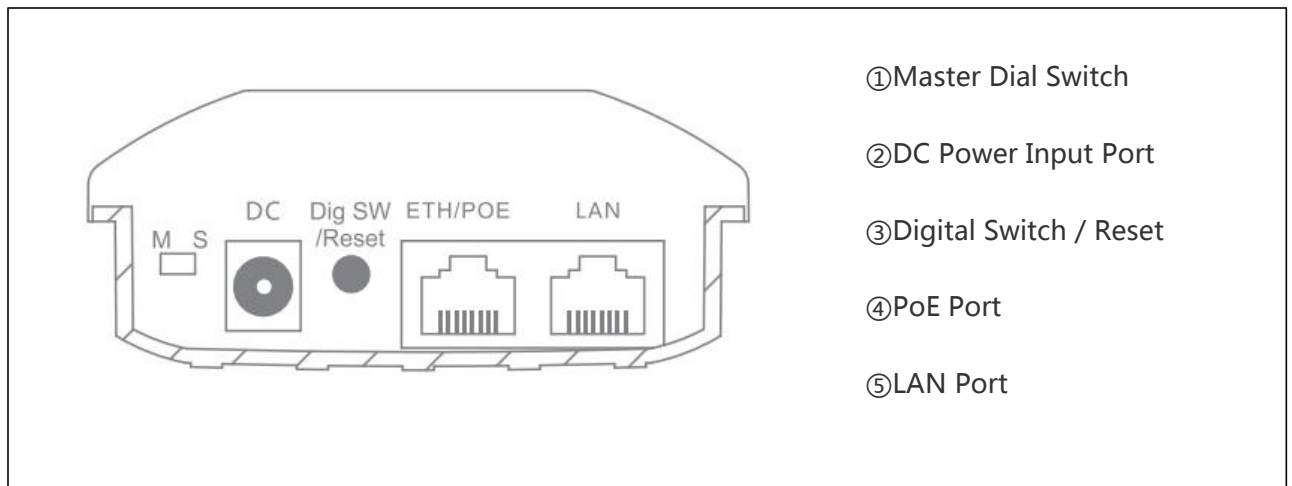
Overview

The CP5-900 is a 5.8GHz 900Mbps long-distance wireless transmission device, with 802.11a/n/an/ac wireless technology. Unique digital matching technology, it is easy to complete matching of point-to-point, point to multipoint without computer configuration. Equipped with industrial waterproof housing, it adapts to the outdoor harsh environment. And it is easy to be installed with the built-in 12dBi antenna. What's more, it enhances the performance and stability of wireless transmission and is widely used in medium and short distance video transmission and data transmission within elevator, scenic spot, factory, & dock etc.

Application



Board Diagram



Specification

Model	CP5-900
Main Chip	MTK7620DA+7162E Processor
Wireless Technology	5.8G: 867Mbps, 802.11a/n/an/ac
Memory	DDR3 64MB
Flash	8MB
Interface	1*10/100/1000 Mbps auto-sensing RJ45 ports 1*10/100 Mbps auto-sensing RJ45 ports
Button	1*Digital Switch/Reset. Value 1 added by short pressing, reset by pressing in 5s.
LED	SIG, ETH, PWR, DIGITAL
Power	Passive PoE: 24V 0.5A DC 12V 1A, power consumption < 10W
Antenna	Built-in 12dBi directional antenna with dual polarization Horizontal angle: 60 degree, vertical angle: 60 degree.
Operating Environment	Temperature: -30°C ~ +55°C (Operation), -40°C ~ +70°C (Storage) Humidity (Non-condensing): 10% ~ 90% (Operation), 5% ~ 95%(Storage)
Dimension	260mm×90mm×37mm
Modulation Mode	OFDM = BPSK,QPSK,16-QAM,64-QAM;DSSS = DBPSK,DQPSK,CCK
Power Output	5.8G(11AC): HT80: 23dBm@ MCS9
Frequency Range	802.11a/n/an/ac : 5.1GHz~5.8GHz (China)
Receiving Sensitivity	11a: -72dbm@54Mbps, -88dbm@6Mbps 11ac: -66.5dbm@MCS7, -83dbm@MCS0
Operating Channel	5G : 36、 40、 44、 48、 52、 56、 60、 64、 149、 153、 157、 161、 182、 186、 190、 194
Operating Mode	Master AP, Slave AP (Through dial switch)
Networking Mode	Point to Point, Point to multipoint (Within 8 points)
Management	WEB Default IP: 169.254.254.254 Username/Password: utepo/utepo
Network	Bridge: Static IP/ Dynamic IP Gateway: Static IP/ Dynamic IP/ PPPoE

Specification

Bridge Management	Binding with cloud account, support remote management
Wireless Management	Bridge configuration, advanced configuration, WIFI configuration
System	Time/ Date Setting, Username Management, Backup/ Restore, Reboot/ Time to Reboot
Update	Local update based on WEB/ Online update

Packing List

CONTENT	QTY
CPE	1
POE Power Supply	1
Mounting Kits	1
Cable	1
User Manual	1

Related Product

NAME	MODEL
2.4G 300M Elevator Exclusive CPE	CP2-300
5.8G 300M Security Exclusive Outdoor CPE	CP5-1200